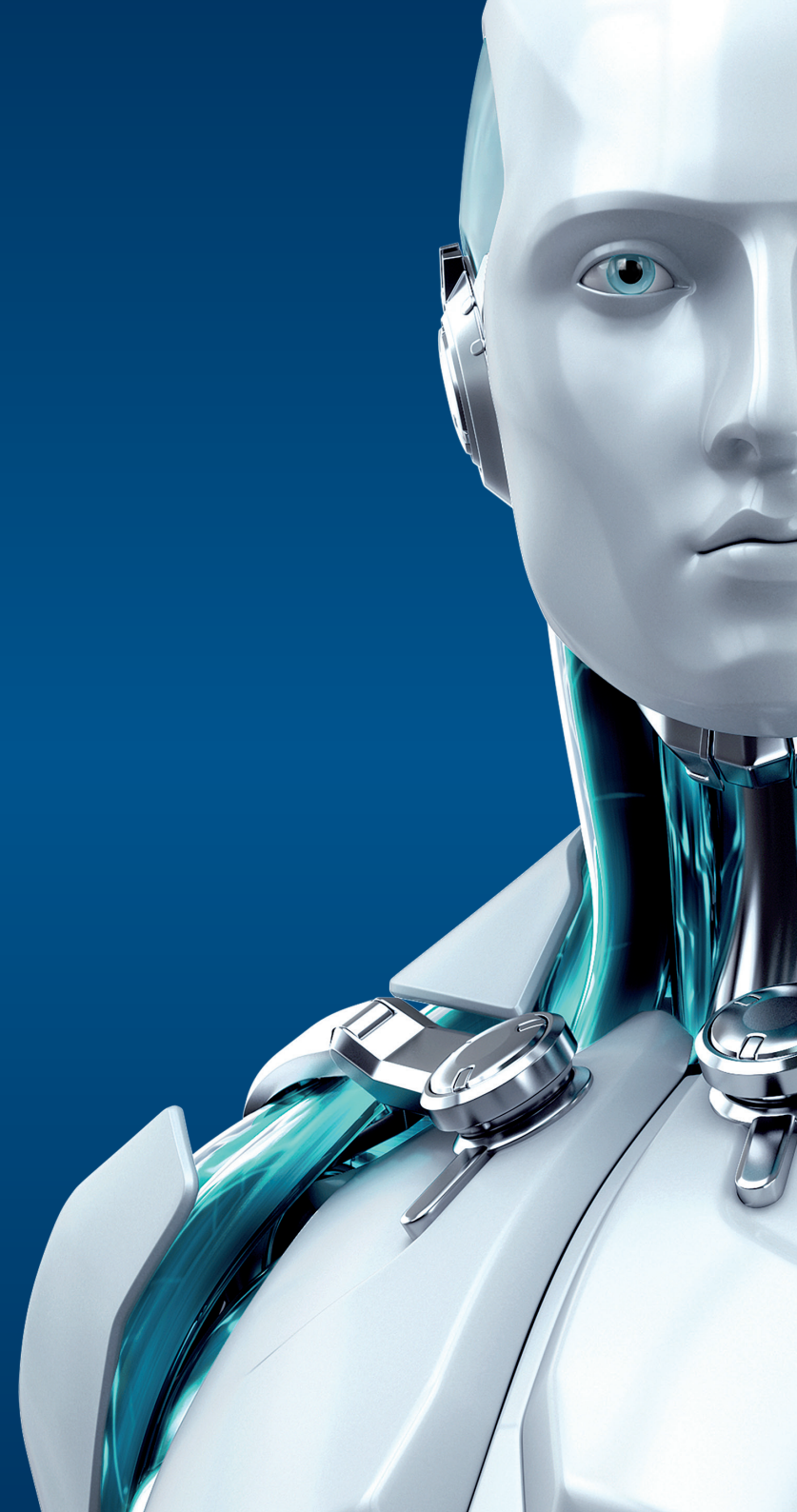




MAIL
SECURITY
FOR LINUX/BSD/SOLARIS

ENJOY SAFER TECHNOLOGY™





MAIL SECURITY

FOR LINUX/BSD/SOLARIS

Operating Systems:

Linux: Kernel version 2.6.x; glibc 2.3.2
or higher

FreeBSD: Version 6.x, 7.x, 8.x

Sun Solaris: Version 10

NetBSD: Version 4

Processor Architecture:

Intel®/AMD® x86/x64



FREE LOCAL
TECHNICAL
SUPPORT

Do More with the help of our specialists.
On call to provide technical support when
you need it.

Copyright © 1992 – 2015 ESET, spol. s r. o. ESET, ESET logo, ESET android figure, NOD32, ESET Smart Security, SysInspector, ThreatSense, ThreatSense.Net, LiveGrid, LiveGrid logo and/or other mentioned products of ESET, spol. s r. o., are registered trademarks of ESET, spol. s r. o. Windows® is a trademark of the Microsoft group of companies. Other here mentioned companies or products might be registered trademarks of their proprietors. Produced according to quality standards of ISO 9001:2008.

Antivirus and Antispyware

Scans all inbound and outbound POP3, SMTP and IMAP traffic

ESETS_SMTP module runs independent of the Mail Transport Agent (MTA)

Filters out email-borne threats, including spyware at the gateway level

Powered by the advanced ThreatSense® technology combining speed, accuracy and minimal system impact

Antispam

Stops spam and phishing messages with high interception rates

Features improved antispam engine with an option to define threshold levels with great precision

Cross-platform Protection

Eliminates malware targeting all platforms, including Windows, Mac and Linux operating systems

Prevents spreading of malware from one platform to another

Remote Administration

Compatible with ESET Remote Administrator and supports management through a web interface

Gives you the option to schedule on-demand scans, actions and security tasks

Allows you to customise log details and modify reports and notifications to help you monitor compliance with company security standards

Smooth Operation

Features content filters for Postfix, Sendmail, Qmail, Exim, Zmailer, and others

Smoothly integrates in the Novell Groupwise environment

Ready for integration with Zarafa collaborative software

Built-in license manager automatically merges two or more licenses with the same customer name

Distribution Independent Solution

ESET provides installers for the most popular distributions

Gives you the option to use the general installation package for less common systems not supported directly

