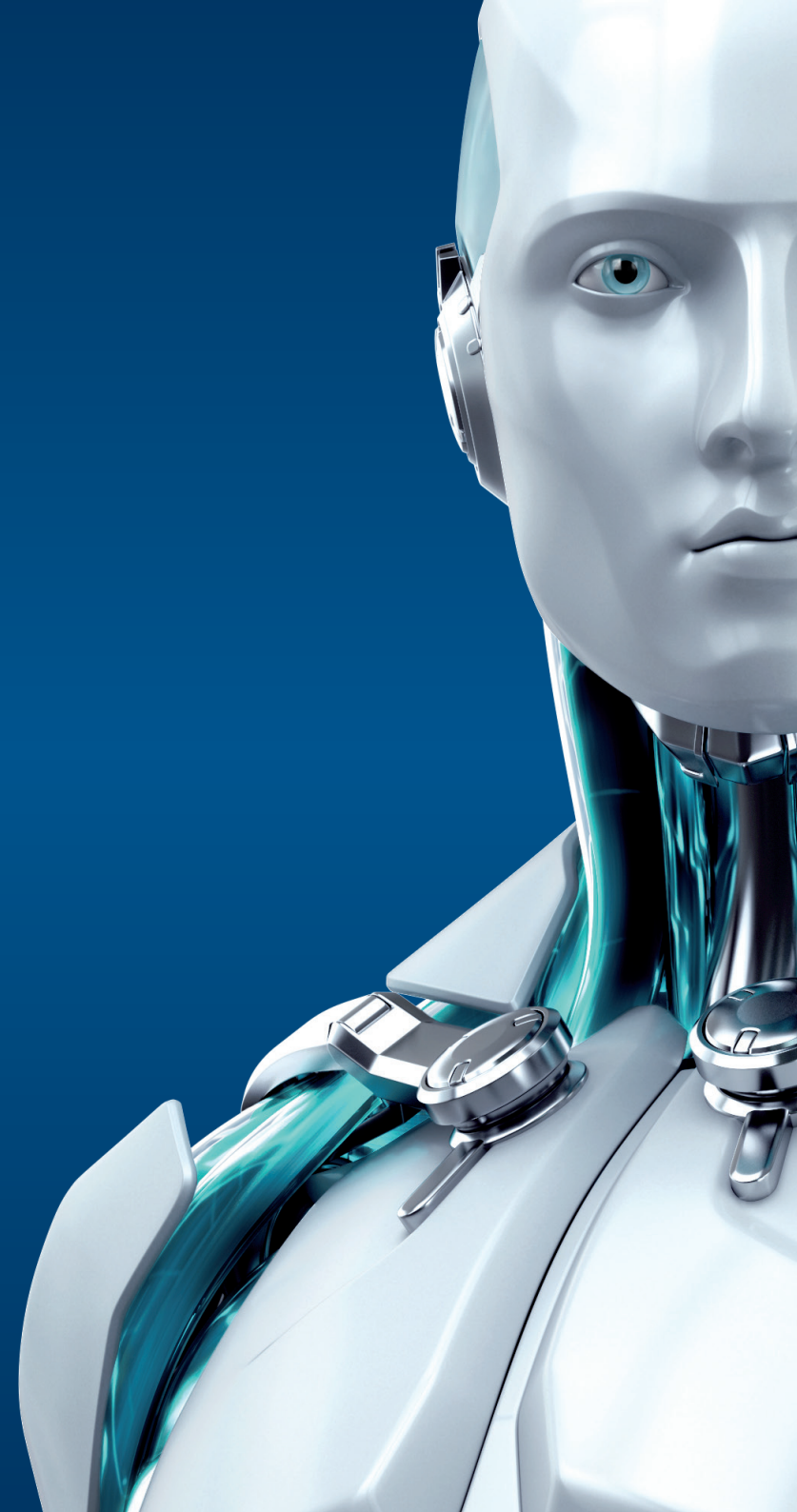




FILE SECURITY

FOR MICROSOFT WINDOWS SERVER
FOR MICROSOFT WINDOWS SERVER CORE

ENJOY SAFER TECHNOLOGY™



ESET® File Security for Microsoft Windows Server and Microsoft Windows Server Core



Operating Systems:

Microsoft Windows Server 2000
Microsoft Windows Server 2003 (32 & 64-bit)
Microsoft Windows Server 2008 (32 & 64-bit)
Microsoft Windows Server 2008 R2
Microsoft Windows Server 2012 Essentials
Microsoft Windows Server 2012
Microsoft Windows Server 2012 R2

Microsoft Windows Server 2008 Core
Microsoft Windows Server 2008 R2 Core
Microsoft Windows Server Core 2012
Microsoft Windows Server 2012 R2 Core

Processor Architecture:

Intel®/AMD® x86/x64



Copyright © 1992–2014 ESET, spol. s r. o. ESET, logo ESET, NOD32, ThreatSense, ThreatSense.Net and/or other mentioned products of ESET, spol. s r. o., are registered trademarks of ESET, spol. s r. o. Other here mentioned companies or products might be registered trademarks of its proprietors. Produced according to quality standards of ISO 9001:2000.

WHAT IT DOES

Antivirus and Antispyware

Eliminates all types of threats including viruses, rootkits, worms and spyware
Provides real-time on-access scanning of the server-stored data
ESET Self-defense prevents malware and unauthorised users from disabling the security of the system
Powered by the advanced ThreatSense® technology combining speed, accuracy and minimal system impact

Cross-platform Protection

Eliminates malware targeting all platforms, including Windows, Mac and Linux operating systems
Prevents malware from spreading from one platform to another

Low System Demands

Delivers proven protection while leaving more system resources for the server's vital tasks

Remote Administration

Compatible with ESET Remote Administrator and supports management through a web interface
Allows you to remotely deploy, manage, update, execute scripts and report on all instances of ESET File Security for Microsoft Windows Server (Core)
Gives the option to schedule on-demand scans, actions and security tasks
Features fully-fledged command line for simplified management of individual Server Core installations

Smooth Operation

Identification of user accounts used in infiltration attempts
Password protected uninstallation
Automatically excludes critical server files
Automatically recognises server software such as Microsoft SQL Server and Microsoft IIS
Automatically detects server roles to exclude critical server files like data stores and paging files from on-access scanning to decrease overhead

ESET SysInspector

Performs in-depth system analysis to identify potential security risks (not available for Core version)

ESET SysRescue

Allows you to create an automatically bootable OS image with installed security solution to clean deeply nested malware and restore system operations (not available for Core version)